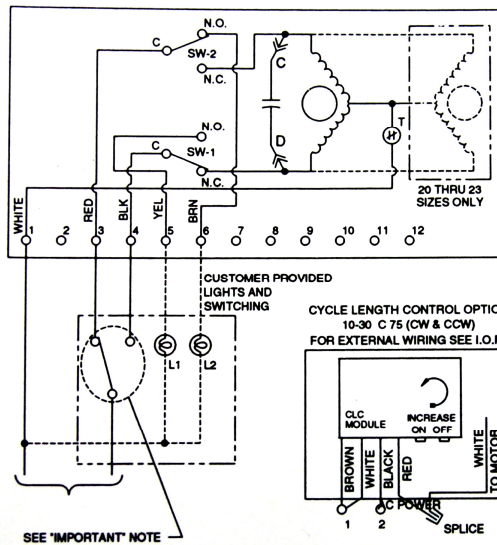


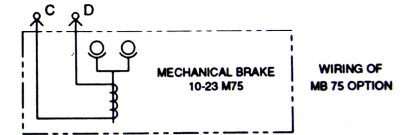
ZH 250 ACTUATOR



CAUTION: SEE TABLE IN INSTALLATION, OPERATION, AND MAINTENANCE MANUAL FOR MINIMUM OVER-CURRENT PROTECTION RATINGS WHEN USED IN MOTOR POWER CIRCUIT. TERMINAL STRIP SPACE IS LIMITED. IF NECESSARY, M1/M2 OPTIONS WIRING TO BE REMOVED FROM TERM. STRIP, TAGGED, AND SPLICED TO EXTERNAL WIRING. TAGS TO INDICATE COMMON, N.O. & N.C. WIRE CONNECTIONS.

1. ACTUATOR SHOWN IN COUNTER-CLOCKWISE EXTREME END OF TRAVEL OR "OPEN" POSITION.
2. A "THERMAL PROTECTOR", AS SHOWN BY Ⓣ IN DIAGRAM, PROTECTS THE MOTOR(S).
3. FACING TERMINAL STRIP SW-1 IS ON RIGHT SIDE AND SW-2 IS ON LEFT SIDE.
4. LIMIT SWITCH MAXIMUM RATING IS: 11A, .33 HP, 125/250 VAC; 4A, 125 VAC "L"; .5A, 125 VDC; .25A, 250 VDC.
5. FOR 12 & 22 75 SIZES, REVERSE THE MOTOR LEADS.
6. CONNECT GROUND TO GREEN GROUNDING SCREW.

IMPORTANT! - EACH ACTUATOR SHOULD BE ELECTRICALLY POWERED THROUGH ITS OWN INDIVIDUAL SINGLE POLE SWITCH CONTACTS TO ISOLATE THE UNUSED WINDING.



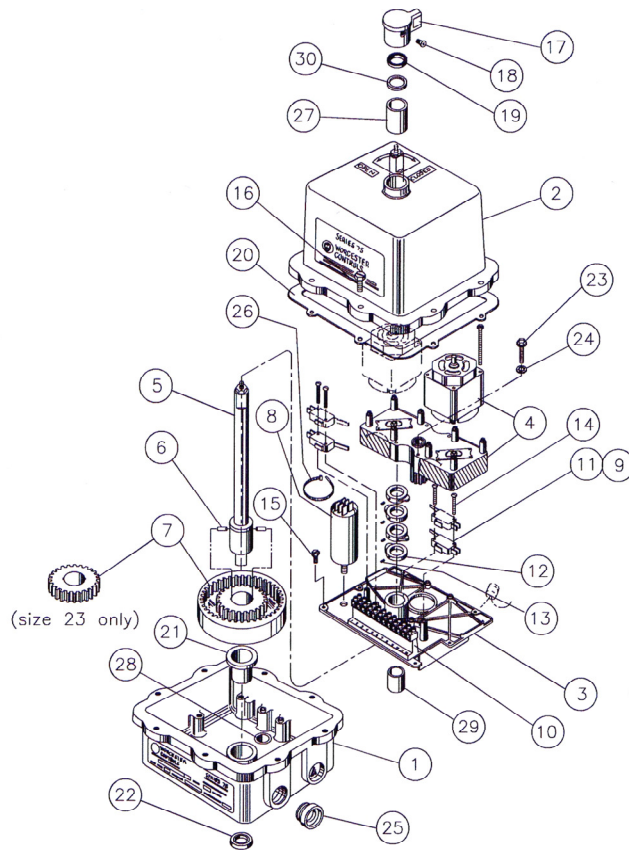
WIRING OF SERIES 75 AC ELECTRIC ACTUATOR

07824-Z

Electrical Details	120 AC/1.5 amp. protection rating, 5 amp. thermal overload protection with automatic reset
Enclosure	Type NEMA 4, water tight
Torque Details	Stall torque in - lb 600, Start up torque in - lb 480
Inlet/Outlet Size	2" NPT or 4" ANSI Class 150 Raised Face Steel Flanges
Ball Valve Body	316 screwed stainless steel, Body width 5.5" (139.7 mm)
Pressure Rating	1,000 psi. (69 bar)
Flow	Full flow in the fully open position

DO NOT BEND MICROSWITCH LEVERS WHEN ADJUSTING THE CAMS FOR ACTUATOR TRAVEL LIMITS

ZH 250 ACTUATOR



Parts List

Item	Qty	Description	Material	Item	Qty	Description	Material
1	1	Base	Aluminium casting	16	8	Hexagon screw	Stainless steel
2	1	Cover	Aluminium casting	17	1	Position indicator	Lexan
3	1	Base plate	Zinc casting	18	1	Indicator set screw	Steel
4	1	Motor module	Zinc casting	19	1	Seal	Reinforced rubber
5	1	Output shaft	Steel	20	1	Gasket	Neoprene
6	2	Gear drive pin	Steel	21	1	Bearing	Buna N
7	1	Bull gear	Steel	22	1	Seal	Bronze
8	1	Capacitor (round or rectangular type)	Phenolic encapsulated	23	4	Screw	Steel
9	2	Switch insulator (not shown)	Nylon	24	4	Lock washer	Steel
10	1	Terminal strip	Polyethylene based material	25	1	Conduit plug	Polyethylene
11	2	Limit switch	Phenolic encapsulated	26	1	Cap tie	Plastic
12	2	Limit switch cam	Zinc casting	27	1	Bearing	Bronze
13	1/CAM	Cam set screw	Steel	28	1	Roller bearing	Steel
14	4	Limit switch screw	Steel	29	1	Bearing base plate	Nylon
15	6	Base plate screw	Steel	30	1	"O" Ring	Buna



R J Mellor & Co Ltd

1 Devonshire Grove, Sheffield, South Yorkshire, England, S17 3PG

Tele: +44 (0) 114 236 8666 Fax: +44(0) 114 236 3020

E-mail: sales@rjmellor.co.uk Web: www.rjmellor.co.uk

Specialist Lubrication
Engineers

The information contained in this data sheet is for guidance only and does not form part of any contract. The accuracy cannot be guaranteed as R J Mellor & Co Ltd. has an ongoing process of development and reserve the right to change the specification of their products without notice